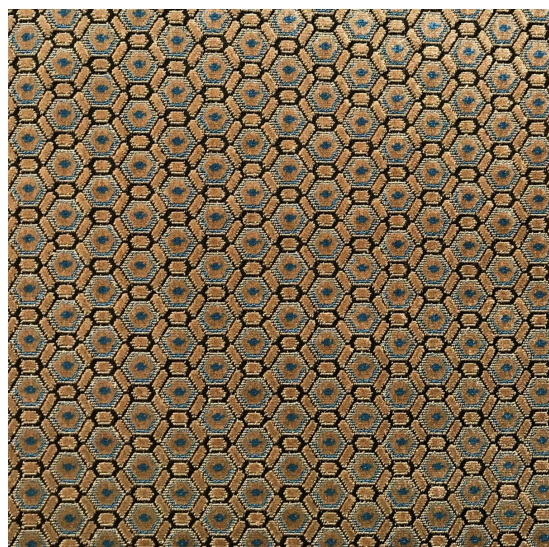




Antoine d'Albiousse

PARIS



Available colors



MANET

Fauve

Velvet with a small Louis XVI - Directoire pattern, woven using the loop-cut velvet technique. This type of velvet is perfect for covering seats or making cushions. Over time, the crushing of the pile due to the successive seating can give a shimmering effect which will give a natural patina over time.

Details

Composition **87% Vi 13% Co**

Width **137 cm**

Raccord **2,9 cm**

Weight **920 g/linear meter**

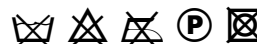
Martindale test **15 000 T**

Usage & Use

Usage



Maintenance



Collection Information

Year

1999

Price range

D

Possible treatments

	Yes	No
No fire M1		•
No fire	•	
Stain-resistant		•
Anti-slip		•

Coaching and Tailor-made services :

Our team is on hand in guiding you through the entire process of choosing the perfect fabrics for your home or to answer any of your questions. According to your needs, we can create personalised fabrics in limited editions (in specific colours, finishings, patterns, embossings, treatments, washes...).

Don't hesitate to contact us - our team will be delighted to assist you.

www.antoinedalbiousse.fr

contact@antoinedalbiousse.fr | +33 6 80 62 61 42