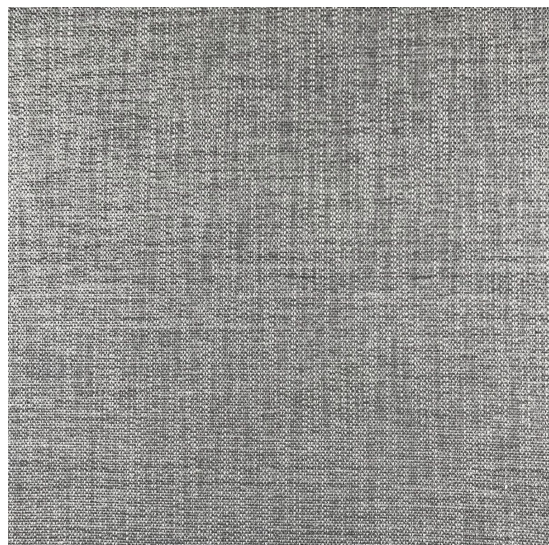




Antoine d'Albiousse

P A R I S

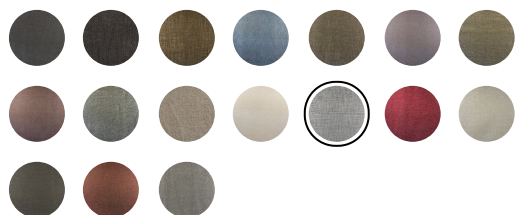


## CAVIAR

### Perle

Caviar is a tweed, mainly weaved from a jute fibre (particularly environmentally friendly) which gives it all its raw material look. The fabric is then stonewashed to give it a vintage look. The nervures and/or mottling stemming resulting from this operation, are a deliberate attempt to rediscover the raw spirit of jute weavings. Due to its resistance and flexibility, this fabric can be used for sofas, upholstering (for a scandinavian spirit) or decoration (ie. curtains).

#### Available colors



#### Details

##### Composition

**40% Ju 20% Co 15% Vi 15% Ac 10% Li**

Width **140 cm**

Weight **827 g/linear meter**

Martindale test **25 000 T**

#### Usage & Use

##### Usage



##### Maintenance



#### Collection Information

##### Year

**2015**

##### Price range

**C**

#### Possible treatments

	Yes	No
No fire M1		•
No fire	•	
Water repellent		•
Anti-slip		•

#### Coaching and Tailor-made services :

Our team is on hand in guiding you through the entire process of choosing the perfect fabrics for your home or to answer any of your questions. According to your needs, we can create personalised fabrics in limited editions (in specific colours, finishings, patterns, embossings, treatments, washes... ).

Don't hesitate to contact us - our team will be delighted to assist you.

[www.antoinedalbiousse.fr](http://www.antoinedalbiousse.fr)

[contact@antoinedalbiousse.fr](mailto:contact@antoinedalbiousse.fr) | +33 6 80 62 61 42